

CERTIFICATE OF LOCATION OF GOVERNMENT CORNER

EAST QUARTER Corner of Section 27, Township 106, Range 39, 5TH P.M.

STATE OF MINNESOTA, County of MURRAY

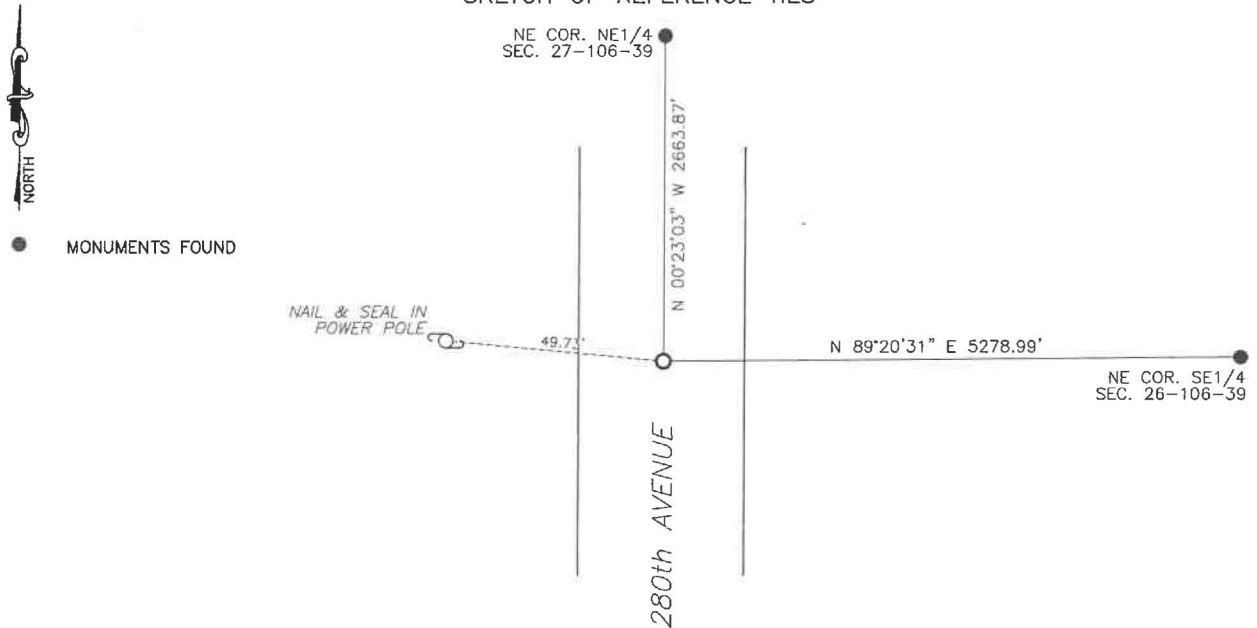
At the corner location shown on the sketch:

On 8/12/2024 found a LARGE FLAT FIELD STONE WITH AN "X" CHISELED ON TOP.
DATE

left monument as found, lowered monument, removed monument (explain)

On 1/29/2025 placed a 5/8" IRON WITH SEAL #43844 OVER TOP OF THE STONE.
DATE

SKETCH OF REFERENCE TIES

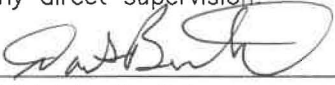


Murray County
Coordinate System NAD83 (1996)
N: 139729.484
E: 569569.902

WGS84
LAT: 43°57'24.2239"
LON: -95°30'08.9900"

Statement of evidence relative to this corner location is on back of page.

I hereby certify that this document and the data contained herein was prepared by me or under my direct supervision


Daniel L. Bueltel
License No. 43844

3/13/2025
DATE

MAR 13 2025


MURRAY COUNTY RECORDER

Statement of Evidence

EAST QUARTER CORNER SECTION 27, T106N, R39W OF THE 5th P.M.

In September 1858 W.J. Neely surveyed the east township line.

In July of 1861 J.W. Myers surveyed the north, south, and west township lines.

In August of 1861 Wellman & Smoot subdivided the township.

A survey by J.W. Woolstencroft dated July 19, 1898 shows a government mound and stone at the corner.

County record dated 1967 shows a concrete monument located at the corner and a steel pin placed above the monument.

County record dated May 16, 2012 show a $\frac{3}{4}$ " steel pin located at the corner.

On August 12, 2024, Bueltel-Moseng Land Surveying found a $\frac{3}{4}$ " iron, removed and dug a large hole with backhoe and found a large 18"x18" field stone with an "x" chiseled on top, recorded the position and placed a $\frac{3}{4}$ " iron on the south side.

Returned on January 29, 2025 and set a $\frac{5}{8}$ " iron with seal #43844 over top of the stone.